



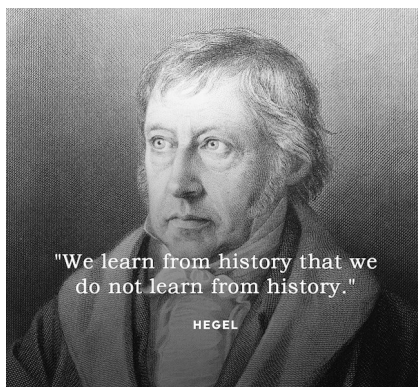
You Are Right !

Firstly, you're right, isn't it about time there was a holistic local history society covering the whole District of Stratford-upon-Avon ?

You're also right in thinking that having a museum enabling people to discover all that lovely history is also rather overdue. And, for goodness sake, visitors to the town really expect one.

Lastly, we hope you're right in thinking: Are these guys really going to just get on and do it without too much talking ! Well, we hope so.

You're also right that you may not have heard of us before. We are a young Society but our members aren't.



They're professionals from all walks of life. They feel passionate that Stratford is letting itself down and are prepared to do something about it.

As it turns out Covid was a watershed period for a town rather reliant on international tourism. Slowly visitors have returned but there remains a very strong 'stay-cationer' presence. We've spoken to English residents who have come from 250miles just for a long weekend here. They, like us locals, know that there's more here than is currently widely publicised but where can they go to find out the breadth and depth of what went on here that is such a very good example of how Britain grew to be Great Britain ? And yes we still are. And Stratford is Great Stratford we've just got to show them !

Where Did You Lot Come From ?

Well, I'm not going to tell you how our Mums got in the family way. However we can tell you that the idea actually started a long time ago. Being born here and growing up here our Chairman left school completely frustrated. Being a fella Shakespeare wasn't his thing and so to do his Engineering degree he picked the furthest university he could -just to get away from Stratford !

Family remained but the bright lights of Leamington, then Coventry then London beckoned. Family popped into the world and retirement at 58 happened. All that time photos happened. Secretly, shhh, many were of Stratford.

In 2023 a series of presentations about the history of English towns that had more history than was obvious was started. The first example was Stratford. There was such an over-whelmingly positive reaction to it intuitively one realised that there must be others who had



suffered this great ignominious frustration too !

A large multinational offered a large amount of webspace for free and thus, as a pure experiment, to further gauge local reaction, a website was started. People offered material. Informal meetings in a pub started and have never stopped.

This stone cart has got rollin' and no amount of moss seems to be able to push it off its tramway.

So do have a look, it's all free and you can't buy anything off it anyway !



Souvenir Edition

Welcome to our straight-talking magazine.

This is the first one and the current plan is to publish four per year. We will be offering you things of interest without too much fluff. If you don't like us tell us why; if we're not doing enough tell us. If you think we are overlooking something get on that email and tell us below.

And if you've got an interest why not join us -see the Home page below.

Online Quiz

If you know your Stratford then you won't find it difficult but it's a challenge to get you thinking. stratforduponavonlocalhistorysociety.org.uk/SpecialistLinks/Quiz.html

Features

Harry Cowan Models	2
Charlecote Mill	2
Our Latest News	4

Stratford Basin Model

It's all our history

Over a significant part of his later life in Rother Street the late Harry Cowan researched, photographed and built three accurate scale models of Stratford as they were in 1840. Sadly Harry passed on and as you may have read in the [Stratford Herald](#) in February his son Will (below centre), faced with a property that was in a dangerous state, decided to remove them. One was so fragile that on attempt at removal it broke up. A second of the *GWR Railway Station* was successfully taken to Didcot Railway



Centre and a group of us banded together to rescue the third: *Stratford's Two Canal Basins* (right). It's now in the tender care of [Stratford Model Railway Club](#) who are looking



for new members particularly to aid with the delicate work of restoration and strengthening. Please do consider helping them not least with the cost of underneath strengthening timber frames. We know that this is a hugely worthwhile project and as a Stratford model of Stratford it will feature prominently in our future museum (more about that on the back page).

Charlecote Mill

It's all our history

This is the first in a series on mills in South Warwickshire as seen on our website (below right).

Where To Locate Your Mill

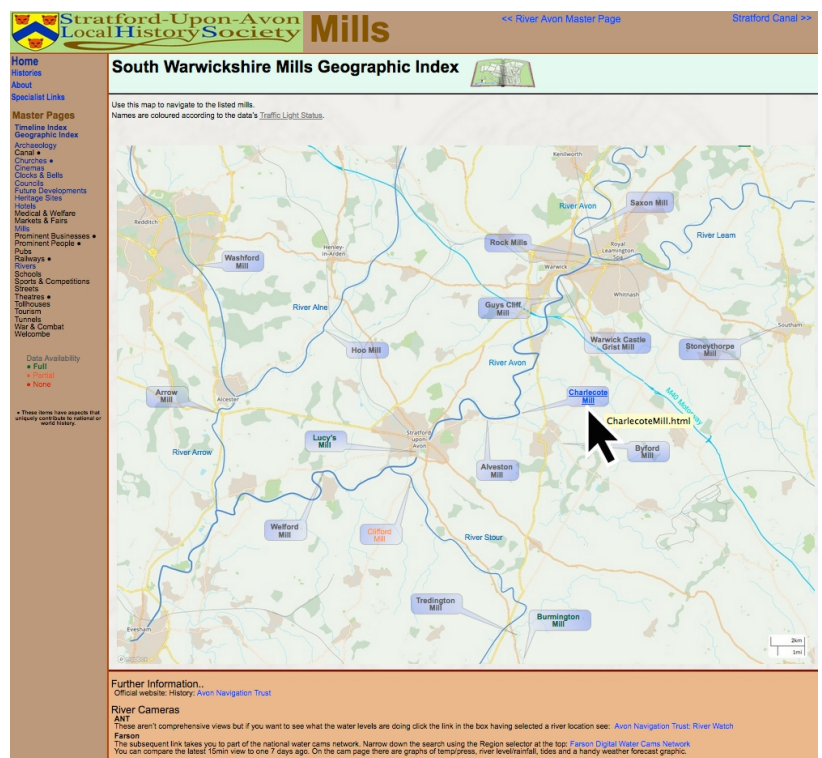
In the *Book Of Winchester*, named after where it was kept but more widely known as The Domesday Book of 1086, (see opendomesday.org/place/SP2656/charlecote/) two mills are mentioned in the vicinity so this must've been an obvious point of narrowing of the valley. Most mills were built at the end of a leet - a controllable diversion of the river that they were going to use.



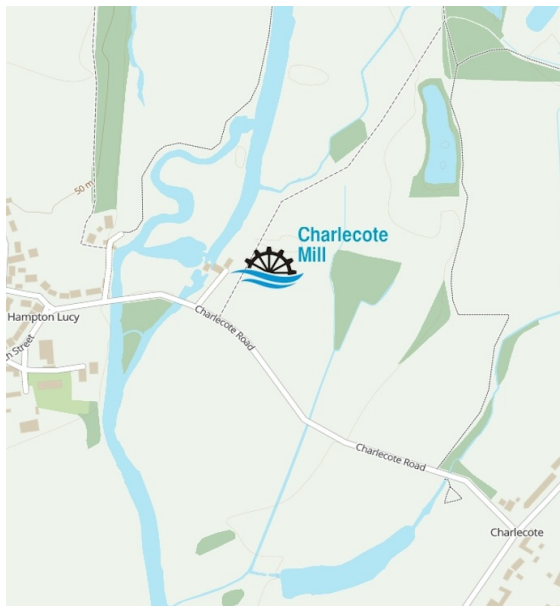
However this mill, as you can see from a more detailed map (on the next page), lies right in the path of the route of the River Avon then as now. Obviously the builders at the time chose a place where, with modest damming up, there was a reasonable drop in height for their water wheel to exploit. It's a very early mill in the scheme of things and its position rendered it subject to serious flooding during the winter and so routes to divert the flow reduced the severity. Even today large floods are a problem.

Who Built The Mills ?

In 1074 the de Luci clan followed William the Conqueror over from Normandy and set up in Essex. By 1247 they were prominent land owners in this part of Warwickshire. At age 48 in 1558 Thomas de Lucy built Charlecote Park and it's inconceivable that he



wouldn't have taken an interest in the mill nearby. It may be him or a son, also called Thomas, who built or rebuilt a mill here. He had twelve children. One of them, Charles, had nine children: Sarah, Thomas, Mary, Matilda, Caroline, George, Jane, William and Elizabeth. This Thomas had six children William, Thomas, Harriett, Mary, Jane and Elizabeth. In 1760

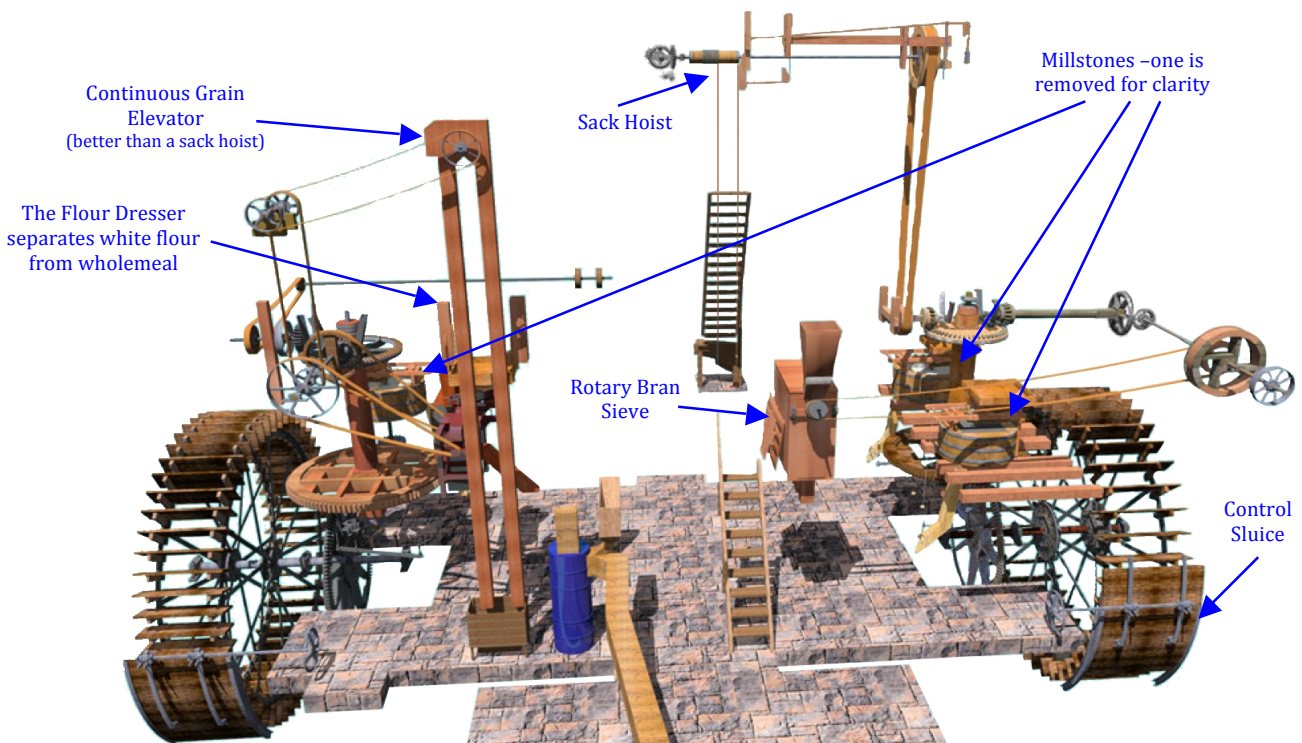
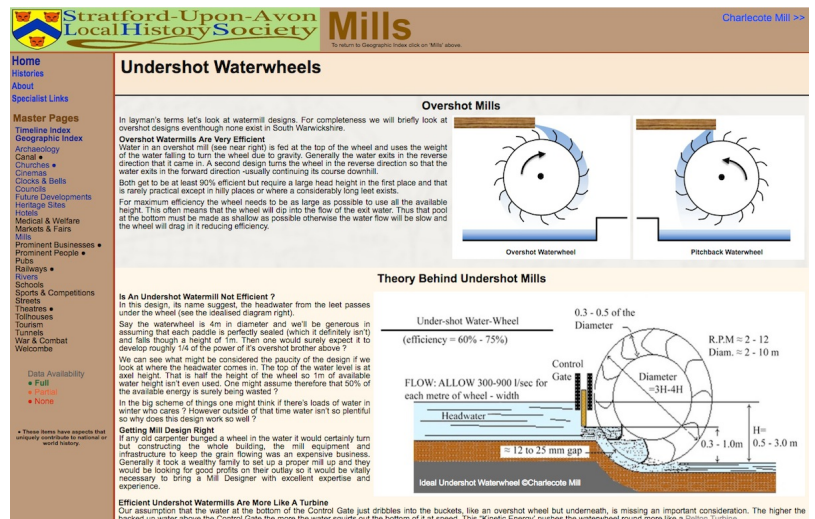


Design Of Charlecote Mill

The website (right) goes into the [Theory Of Waterwheels](#) and why two independent wheels are better than one large one but let's look closer at this exceedingly successful design.

In 2012 John Brandrick went to a huge amount of trouble to survey it and then produce [3D models](#). Just one image of many is shown here.

In order to maintain productivity sacks of grain are emptied into a huge top floor hopper. Fire is a massive problem in wind and water mills either due to uncontrolled friction or to germination of the grain. Therefore boys slept above the hopper and give an early shout if they smelt any unusual smells.



Operating And In Great Demand

Karl Grevatt and his team run the mill. Six types of flour are available in [20 shops around the county](#) (eg Zero in Rother Street) and they will deliver direct. There are full Open Days once per month with two in August.

Our Archive pictures, linked at the bottom of our webpage: [Charlecote Mill](#), take one through the progress of wheat though the stages of its operation –right through to the bags of flour that you buy. Do pay them a visit –they are lovely people.



Society News

Notice Of AGM 7pm 2nd July

One Elm Pub, Guild Street

We need to get ourselves fit for the needs of the society ahead.

Firstly we need to formally recognise the current Officers of the society and take proposals for the vacancies we currently hold. All posts are valid for a period of one year.

Next, in order for us to open a bank account, HSBC requires us to pass a motion to do so.

Any society needs cash so we propose to charge subs of £8 from August.

The formal voting will take place at approximately 7:15pm and we'd like as many people as possible to be present. You don't have to stay afterwards but please come.

Our Possible First Home

Advanced discussions have taken place and we have been offered the use of the ground floor of some central Stratford premises. **NEW HOME**

Until the Memorandum Of Understanding has been agreed we cannot announce where this will be just yet. However it is an extremely helpful offer as it will afford a lot of 'passing trade' which will enable us to physically meet with people in Stratford that we would not otherwise have reached.

Watch this space.



Social Celebration

Tue 13th August

In less than a year we have come a huge long way. It has all been such a pleasure so far.

In order to celebrate in a relaxed atmosphere members, readers, partners and just plain any interested parties are all welcome to join us at the address below.

You don't have to RSVP but if you want to help a bit with the planning you can:

Ring or text: [07761-973365](tel:07761973365)

Or Email: stratfordlhs@gmail.com

See you there or on Tuesdays (see Home page)

Everybody
Welcome

Stratford-Upon-Avon Local History Society

Summer Barbecue

A celebration of our achievements in our FIRST YEAR

6-9pm Tuesday 13th August 2024

12 Blue Cap Road, Stratford CV37 6TG

Salad, buns, relishes and non-alcoholic punch from our own bar.
Bring your own meat or vegan burgers and alcohol.

Ample free parking

Come play the Giant Jenga Game.

Feeling Green - Are You New To Our Website ?

To get there Google search for the web address on p1 or point your mobile's camera at the code to the left, tap the address that appears and you'll be on the Home page. It's all worth a good look but you might want to start at the FAQ's on the *New To SLHS* page (see right).



We support many other organizations but all our own material is within the *Histories* pages. Menus are on the left, shortcuts at the top. There are geographic, timeline and alphabetical indexes with oodles of cross-references and external links. At last History is fun !

Welcome

New To SLHS

If you are new to this website please feel free to contact the webmaster below. However before you do we hope that the following may be of help.

Frequently Asked Questions

What Are Master Pages ?
There are many of these to get you to your subject FAST! They will be text based, a geographic index (pages only), a timeline (people and places) or based upon an initial theme. Colour coding of links is used throughout.

Is Data Still Being Added ?
The database is huge and will continue to be added to frequently. You will know how much data is on a page before you go to it by the brown arrow Traffic Light Status.

Are There Many Links ?
Pages contain many many of these and they can be distracting and so they appear in slightly lighter than normal text until you hover over them (see the traffic light status link immediately above).